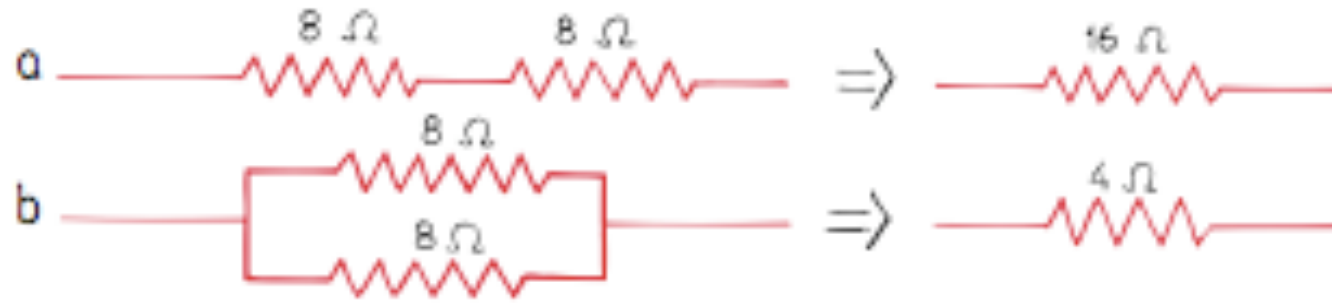


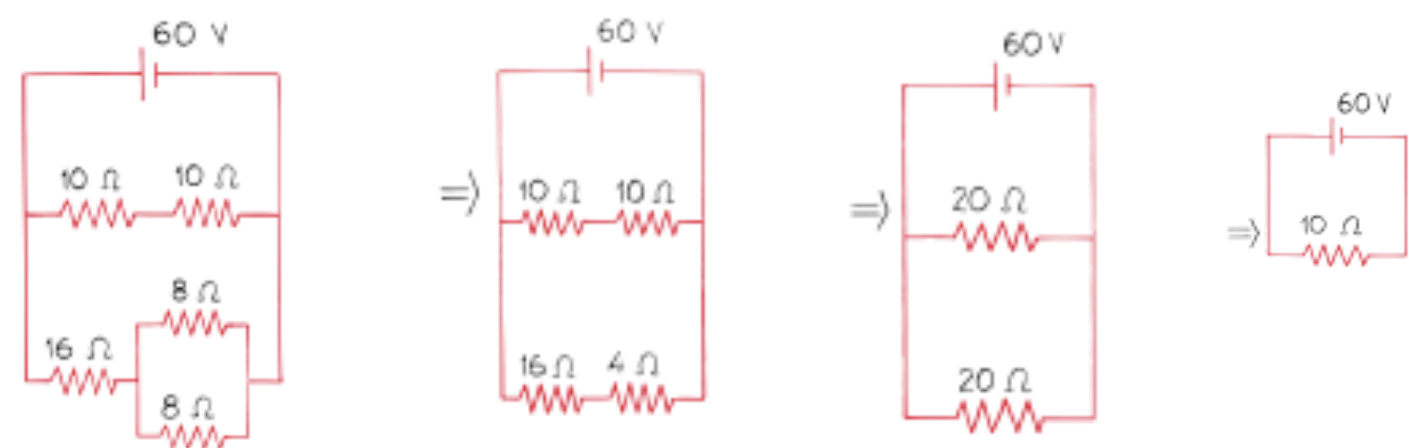
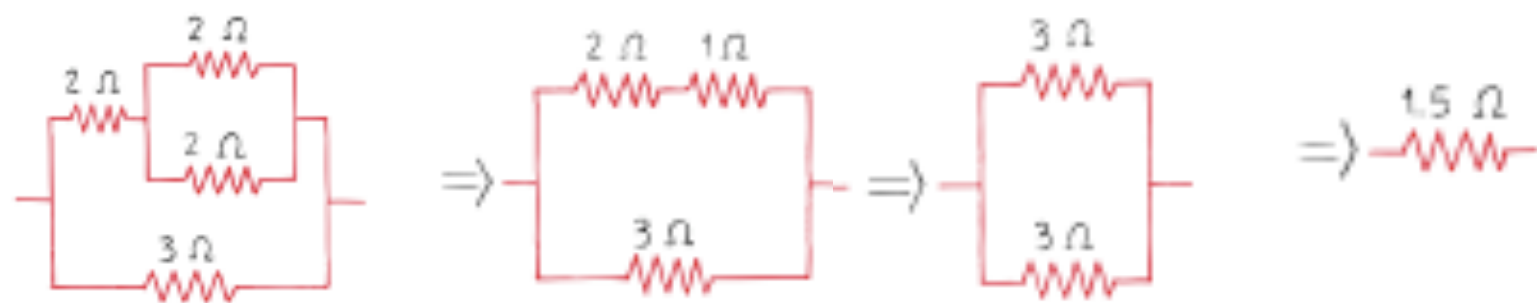
Combination Circuits

Combining Resistors



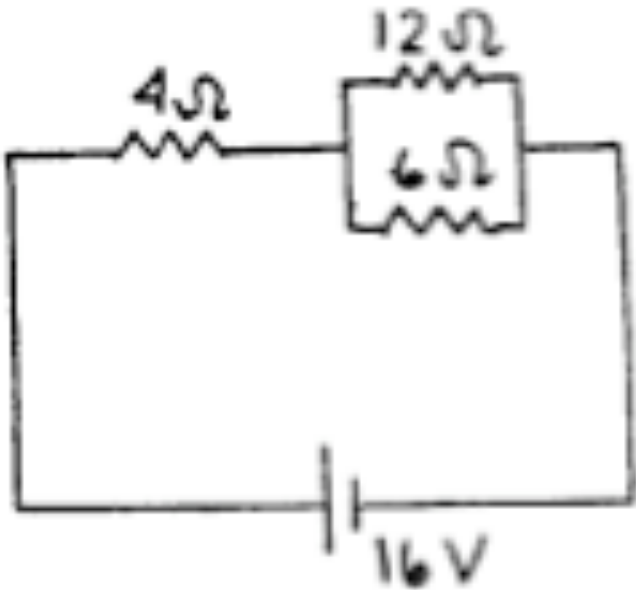
- Series $R_{eq} = R_1 + R_2 + R_3 + \dots$

- Parallel $\frac{1}{R_{eq}} = \frac{1}{R_1} + \frac{1}{R_2} + \frac{1}{R_3} + \dots$

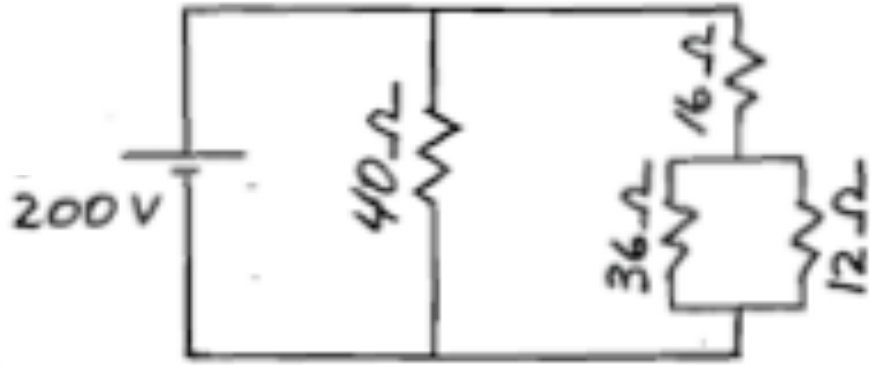


Example 1: Combination Circuits

- Find the total current passing through the circuit.



Example 2: Circuits



Find the voltage drop across each resistor, the current through each resistor, the total current supplied by the battery, and the total power delivered by the battery.